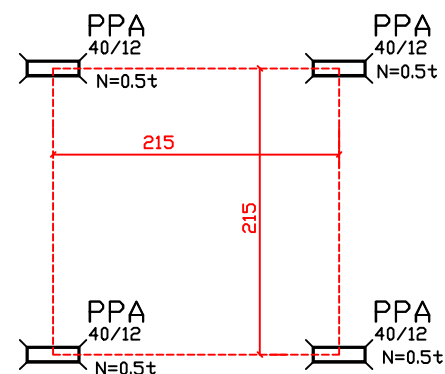
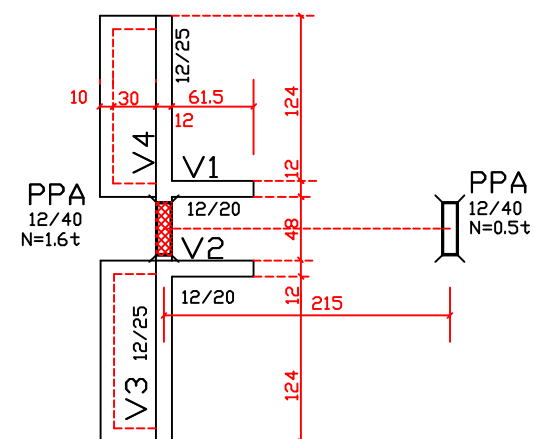


PASSARELA 03

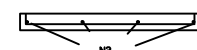
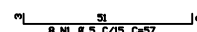
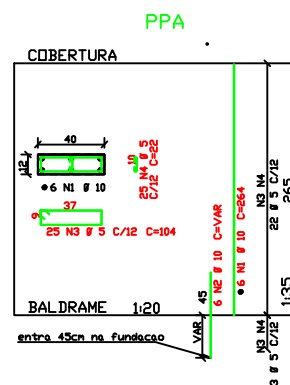


PASSARELA 02

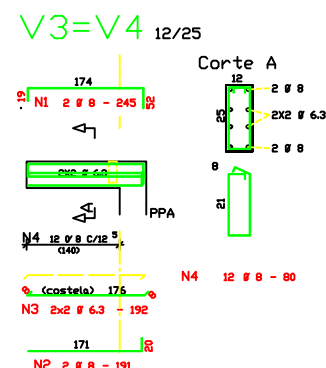
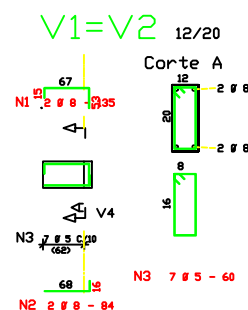


PASSARELA 03 COM BEBEDOURO

PLANTA de LOCALACAO e CARGAS dos PILARES



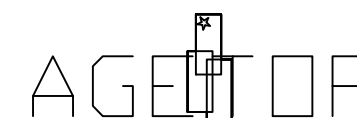
ARMACAO do BEBEDOURO
Esc.1/10



ACO	PDS	BIT (mm)	QUANT	COMPRIMENTO UNIT (cm)	TOTAL (cm)
PPA (XB)	30B	1	10	48	264
	50B	2	10	48	4320
	60B	3	5	200	104
	60B	4	5	200	22
V1=V2 (X2)					
50A	1	8	4	135	540
50A	2	8	4	84	336
60B	3	5	14	60	840
V3=V4 (X2)					
50A	1	8	4	245	980
50A	2	8	4	191	764
50A	3	6.3	8	192	1536
50A	4	8	24	80	1920
ARMACAO do BEBEDOURO					
60B	1	5	8	57	456
60B	2	5	4	120	320

ACO	BIT (mm)	COMPR (cm)	PESO (kg)
50B	10	170	107
60B	5	270	43
50A	6.3	15	4
50A	8	45	18
Peso Total 50B =			107 kg
Peso Total 60B =			43 kg
Peso Total 50A =			22 kg

Volume de concreto de VIGAS (m³): 1 170.4 197.7
Taxa de armadura (kg/m³): 170.4 197.7



AGENCIA GOIANA DE TRANSPORTES E OBRAS PUBLICAS
AV. GOVERNADOR JOSE LUIZ DE ALMEIDA N.º 01 - C. J. CAICARA

UNID. ESC. LAJE PLANA - TERREO
PADRAO CRISA -97 -PASSARELAS

PROPRIETARIO: _____

AUTOR DO PROJETO: _____

Eng. CIVIL TAMILIA CRISTINA ROSA ABRANTES CRE-40 4376/D

R.T. DA OBRA: _____

PROJETO ESTRUTURAL
CONCRETO ARMADO

CONTEUDO	DETALHES GERAIS DA PASSARELA	FOLHA
DATA: JUN/01	ESCALA: 1:50 OU IND.	PLTAGEM: 1:10
PE		UNICA